



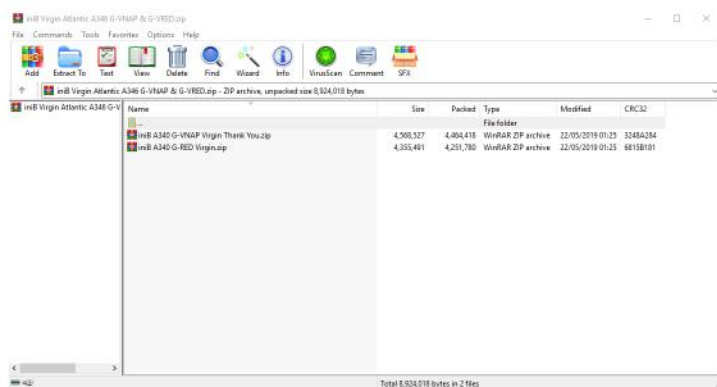
iniBuilds

Blackbox Livery Install Guide



Please ensure you have the latest version of the aircraft installed.

Step 1:



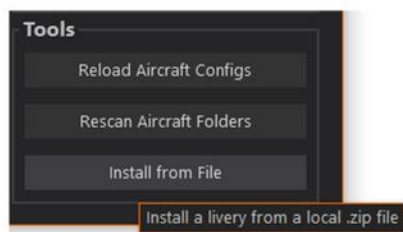
Extract each individual livery from the zipped folder to any folder.

Step 2:



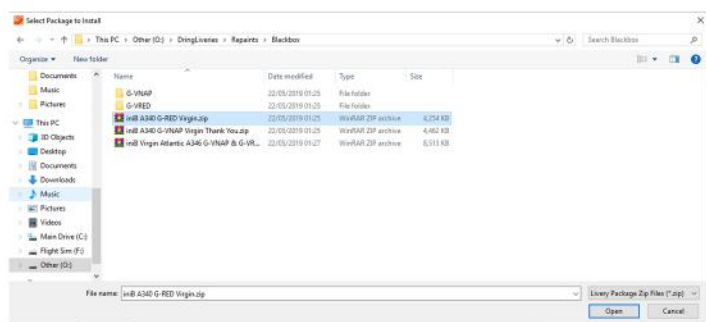
Open the Blackbox PreFlight Manager.

Step 3:



Select Install from file in the bottom right corner.

Step 4:



For each livery, select each livery and click open.

The liveries should now be installed.

Enjoy!